

Embedded and panel computers

APT4010AT
 HW string
 Výrobní číslo AC32476
 Serial number
 Adresa IP 192.168.168.95
 IP address
 Teplota CPU 39.0
 CPU temperature



- industrial computers on a PC platform
- fanless panel computers with Arm Cortex-A53 quad-core 1.6 GHz
- TFT 10.1" (1,024 × 600 pixels)
TFT 15.6" (1,366 × 768 pixels)
- communication options – 2× USB, 2× Ethernet, RS232, RS485 with GI
- robust design for industrial environment
- external storage – microSD card, miniPCIe/mSATA slot
- power supply 24 V DC
- extended range of operating temperature (-20 °C to 50 °C)



AMIT, spol. s r.o.
 Videňská 118,
 619 00 Brno, CZ
 phone: +420 549 210 403
 e-mail: amit@amitautomation.com

Headquarters:
 Radlická 740/113c,
 158 00 Prague, CZ
 phone: +420 222 781 516

Technical support:
 phone: +420 549 210 276
 e-mail: support@amitautomation.com

**Automating
 Your Success®**

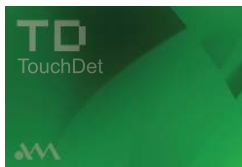
amitautomation.com

Industrial computers

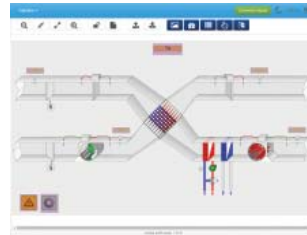
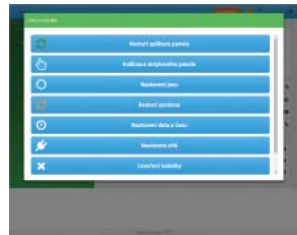
PC platform-based panel computers and embedded computers by AMiT company support open software standards. That makes them flexible to changes in a dynamic IT environment. These panel computers can operate most of the operating systems available. As a standard, the computers come with a pre-installed GNU/Linux or with TouchDet, a supervision and visualisation environment.



	APTXA4010AT	APTXA4015AT	PPCXA4000AT
CPU	Arm Cortex-A53 quad-core 1.6 GHz, 2 GB RAM DDR3, 4 GB eMMC Flash		
Display	TFT 10.1" , (1,024 × 600) pixels, 262k colours	TFT 15.6" , (1,366 × 768) pixels, 262k colours	–
Touch panel	(227 × 128) mm, resistive	(347 × 197) mm, resistive	–
Interface	2 × USB 2.0 type A 2 × Ethernet, 1 Gbps / RJ45 1 × RS232, D-sub DE-9 1 × RS485 with GI	2 × USB 2.0 type A 2 × Ethernet, 1 Gbps / RJ45 1 × RS232, D-sub DE-9 1 × RS485 with GI	2 × USB 2.0 type A 2 × Ethernet, 1 Gbps / RJ45 1 × RS232, D-sub DE-9 1 × RS485 with GI 1 × HDMI type A
External storage slots	1 × microSD card slot 1 × miniPCIe/mSATA slot	1 × microSD card slot 1 × miniPCIe/mSATA slot	1 × microSD card slot 1 × miniPCIe/mSATA slot
Power supply	16.8 V DC to 33.6 V DC (max. 0.5 A at 24 V DC)	16.8 V DC to 33.6 V DC (max. 1 A at 24 V DC)	16.8 V DC to 33.6 V DC (max. 0.4 A at 24 V DC)
Ingress protection rate – front panel / rear cover	IP54 / IP20	IP54 / IP20	IP20
Operating temperature range	-20 °C to 50 °C	-20 °C to 50 °C	-20 °C to 50 °C
Weight	2.00 kg	4.00 kg	1.30 kg
Dimensions (w × h × d)	(290 × 187 × 56) mm	(420 × 254 × 66) mm	(222.5 × 164 × 57) mm
Operating system	Linux (APTXA4010A) TouchDet (APTXA4010AT)	Linux (APTXA4015A) TouchDet (APTXA4015AT)	Linux (PPCXA4000A) TouchDet (PPCXA4000AT)



TouchDet



Development environment for on-line parametrisation of visualisation in industrial computers of the APTXA401xAT series and PPCXA4000AT by means of a web browser. It provides programmers with a full-fledged development tool without the necessity of installing any software after the connection to the panel computer, the user may immediately create

a visualisation application for local display of data on the panel computer screen as well as a visualisation on a remote PC by means of a standard web browser – all that with no knowledge of web technology programming necessary. The application is created only once for both display approaches. The user may change the application at any time while the device is

running – no restarts or display interruptions necessary. There is also the option of off-line application development, without the necessity of connection to the panel/embedded computer. However, it is then necessary to install TouchDet on the computer.



EUROPEAN UNION
European Regional Development Fund
Operational Programme Enterprise
and Innovations for Competitiveness

