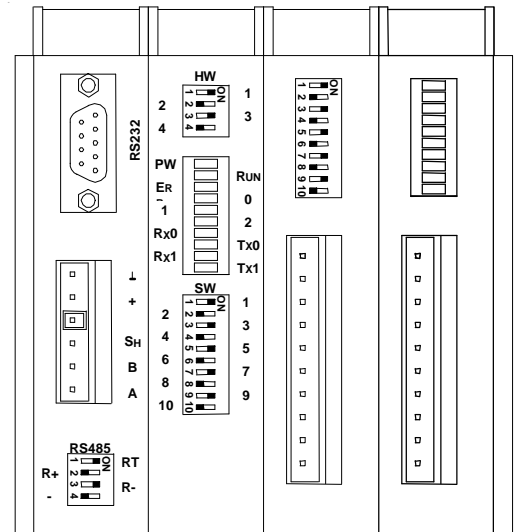


AD-FAI8-A

8 bipolar fast analogue inputs

- 8 analogue inputs
- Input measuring ranges -10 to +10 V
- 10 bits converter
- Self-stacking connection to the AD-CPU167 unit, DIN rail mounting



TECHNICAL DATA

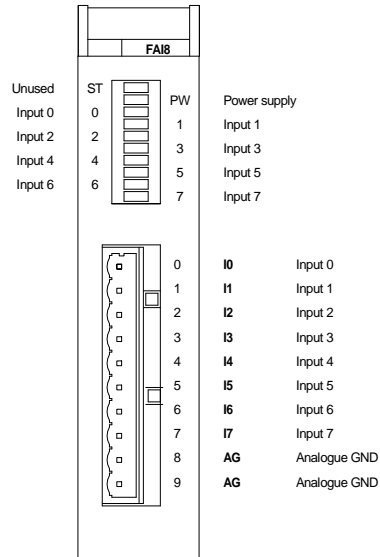
Number of inputs	8 with common analogue ground
Galvanic separation	No
A/D converter resolution	10 bits
Gain drop at 2 kHz	1.5 %
Input voltage range/1 bit resolution	-10 to +10 V / 19.54 mV
Max. input voltage	±50 V
General absolute accuracy	1.5 %
Zero error	1.5 %
Repeated measurement accuracy	0.5 %
Input condition for LED switch on	Approximately 4% of the full range for $f > 10\text{Hz}$
Input signal coding	0 V -> 200h -10 V -> 3FFh +10 V -> 000h
Max. number of modules	1
Module position in system	1. position in configuration behind the AD-CPU *)
Max. internal source consumption (24 V DC)	< 30 mA
Max. internal source consumption (5 V DC)	< 40 mA
Input signal connection	WAGO 231 cage clamp connectors, code protection against mistaking
Mounting	35 mm DIN rail
Operating temperature	0 to 70 °C
Max. ambient humidity	< 95 % non-condensing
Weight	200 g
Dimensions (w x h x d)	25 x 104 x 96 mm

Note: *) It is possible to combine this module with one AD-AI5 (only first two inputs are usable) or two AD-AI8.

ORDERING INFORMATION

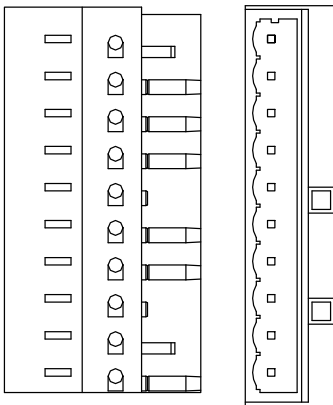
AD-FAI8-A	8 analogue inputs -10 to +10 V / 2 kHz / 1.5 % module, WAGO231-310 connector, data sheet, warranty card, user's manual
-----------	--

MODULE DESCRIPTION AND SIGNAL ASSIGNMENT

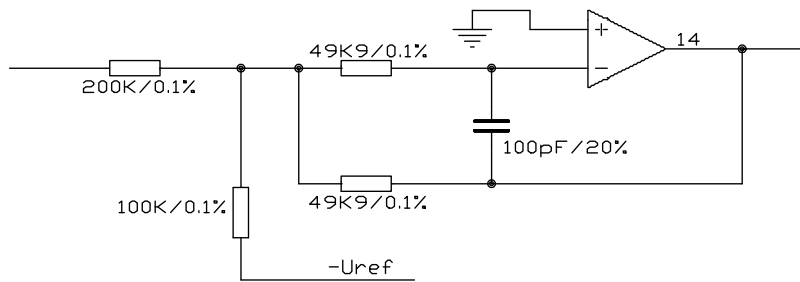


Note: The AG terminals are internally connected with the GND terminal at the AD-CPU167 power supply connector.

CONNECTOR CODING



INPUT CIRCUIT WIRING



WIRING EXAMPLE

