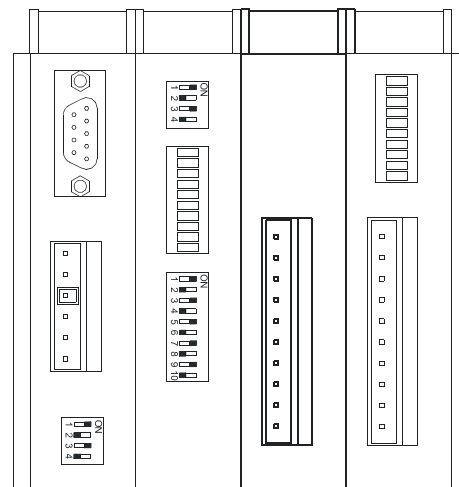


AD-NI8

8 Analogue Inputs for Ni1000 Temperature Sensors

- 8 analogue inputs for Ni1000 temperature sensors
- 10 bits converter
- Self-stacking connection to the AD-CPU167 unit, DIN rail mounting



TECHNICAL DATA

Number of inputs	8 with common analogue ground
Galvanic separation	No
A/D converter resolution	10 bits
1 bit resolution	0.3 °C *)
Repeated measurement accuracy	0.3 % **)
Max. number of modules	10 ***)
Module position in system	1. to 10. position in configuration behind the AD-CPU167
Max. internal source consumption (24 V DC)	60 mA
Input signal connection	WAGO 231 cage clamp connectors, code protection against mistaking
Mounting	35 mm DIN rail
Operating temperature	0 to 70 °C
Max. ambient humidity	< 95 % non-condensing
Weight	200 g
Dimensions (w x h x d)	25 x 104 x 96 mm

*) At 0 °C

***) Provided that the sensor leads resistance is lower than 1 Ohm

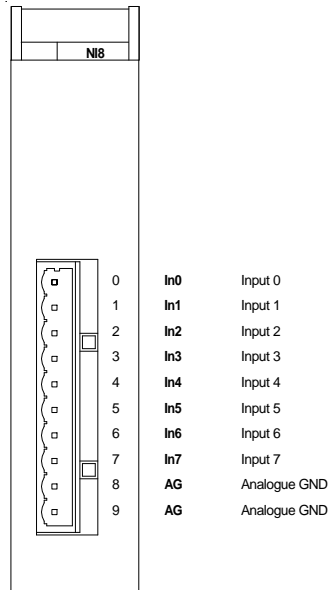
***) Combination AD-AI5 + AD-NI5 is possible

Note: Combination as 1 x AD-AI5 + 5 x AD-AI8 or 1 x AD-NI5 + 5 x AD-AI8 are possible. AD-NI8 modules could be combined with AD-AI8 modules without any restriction (limit 10 modules and position had to be kept).

ORDERING INFORMATION

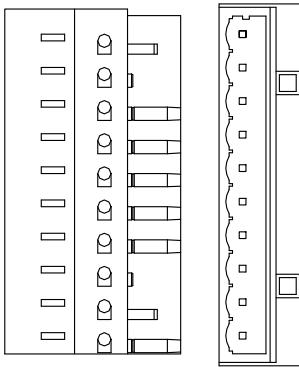
AD-NI8	8 analogue inputs module for Ni1000 temperature sensors, WAGO231-310 connector, data sheet, warranty card
---------------	-----------------------------------------------------------------------------------------------------------

MODULE DESCRIPTION AND SIGNAL ASSIGNMENT

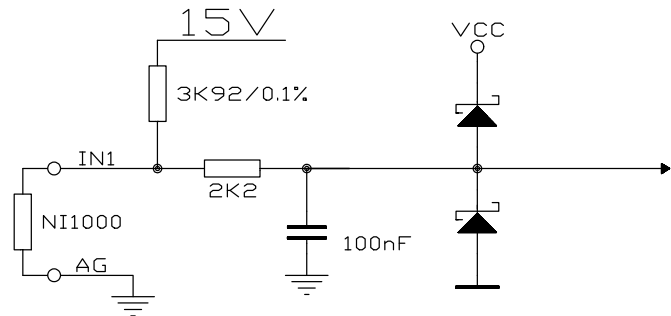


Note: The AG terminals are internally connected with \perp (the GND terminal) at the AD-CPU167 power supply connector.

CONNECTOR CODING



INPUT CIRCUIT WIRING



WIRING EXAMPLES

