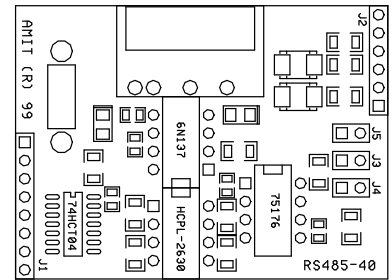


AM-RS485

Communication Module

- RS485 interface communication module
- TTL control
- Power supply +5 V
- Soft overvoltage protection



TECHNICAL DATA

Overvoltage protection	Transil 600 W
Galvanic separation	Yes ¹⁾
Terminating resistor	120 Ohm on module
Idle state definition up to 5 V DC up to 0 V DC	1 kOhm on module 1 kOhm on module
Power supply	5 V DC ±10 %
Control signals	TTL
Operating temperature	-40 °C to 70 °C
Max. ambient humidity	< 95 % non-condensing
Cover protection rate	IP00
Dimensions (w × h × d)	(38.5 × 51.5 × 20) mm
Weight	50 g
Connection terminals	PIN with 2.5 mm grid

¹⁾ Insulation strength 500 V AC / 1 minute, galvanic separation may not be used for safe and unsafe parts separation.

ORDERING INFORMATION

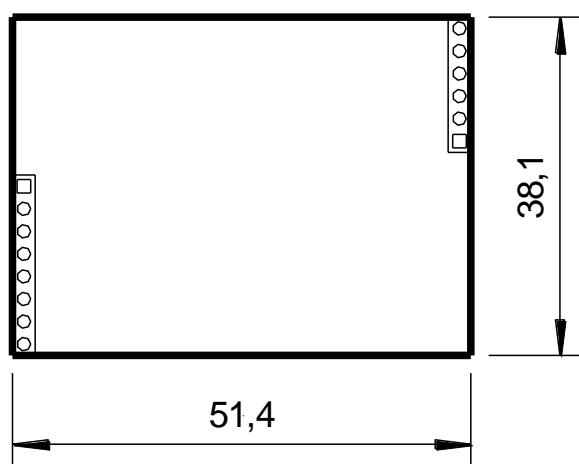
AM-RS485	RS485 interface communication module
----------	--------------------------------------

CONNECTORS WIRING

J1 connector		
PIN	Signal	Description
1	Vcc	Power supply +5 V DC
2	TxD0	Output for LED indication
3	TxD	Input TTL
4	TxEN	Transmission trigger
5	RxD	Output TTL
6	NC	Not used
7	GND	Ground
8	GND	Ground

J2 connector		
PIN	Signal	Description
1	Shield	Shield
2	A	A – RS485
3	B	B – RS485
4	NC	Not used
5	NC	Not used
6	Shield	Shield

PHYSICAL DIMENSIONS



JUMPERS ASSIGNMENT

Jumpers	Assignment
J3	Idle state definition, signal B
J4	Idle state definition, signal A
J5	Terminating resistor 120 Ohm

The jumpers are only closed at the end stations and disconnected at the intermediate stations.