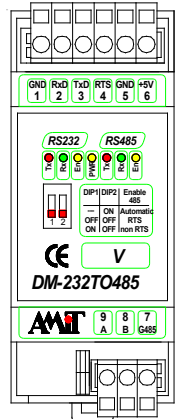


DM-232TO485V

RS232/RS485 converter with power supply 5 V

- Galvanic isolation with soft overvoltage protections
- Transmission speed 0 bps to 115 kbps
- Automatic or controlled transmission direction
- LED state indication on the interfaces
- Mounting on DIN rail, power supply 5 V DC



TECHNICAL DATA

Transmission control	RTS / non RTS / Automatic *)
Transmission speed	0 bps to 115 kbps
Galvanic isolation	Yes
Insulation strength of galvanic isolation	600 V AC / 1 min.
Overvoltage protections	Yes (supressor diodes 600 W)
Power supply	4.75 V DC to 5.25 V DC
Maximum power consumption	220 mA
Ingress protection rate	IP20
Mounting	35 mm rail
Operating temperature range	0 °C to 50 °C
Maximum ambient humidity	95 % non-condensing
Dimensions (w × h × d)	(36 × 91 × 73) mm

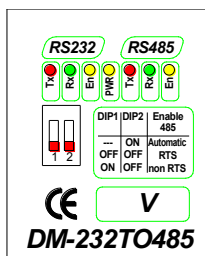
*) In accordance with a configuration, see table

TRANSMISSION CONTROL SETTINGS

DIP1	DIP2	Selection	Description
–	ON	Automatic	RS485 interface transmitter is automatically activated by a state of signal Tx
OFF	OFF	RS	RS485 interface transmitter is activated by control signal RTS in a state LOG 0
ON	OFF	non RTS	RS485 interface transmitter is activated by control signal RTS in a state LOG 1

A receiver does not repeat the transmitted characters.

INDICATION

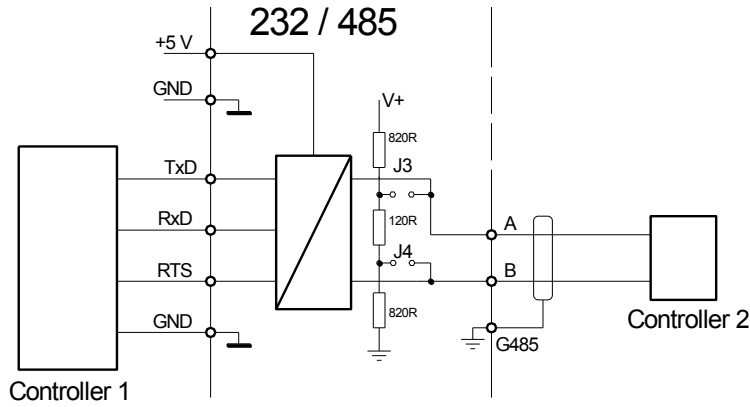


- If the interface transmits the state LOG 0, Tx LED of appropriate interface lights
- If the interface receives the state LOG 0, Rx LED of appropriate interface lights
- If the interface is active, En LED of appropriate interface lights
- PWR LED lights when the power supply +5 V DC is connected

ORDERING INFORMATION

DM-232TO485V	Converter of RS232/RS485 communication interfaces with power supply 5 V DC, adjustable switching mode
---------------------	---

CONFIGURATION JUMPERS DESCRIPTION

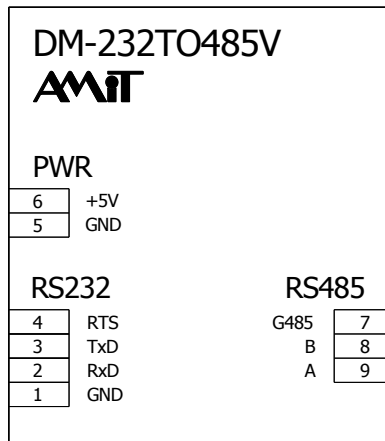


A terminator (the jumpers J3+J4 next to the connector RS485) has to be always connected at the segment terminations, otherwise do not connect.

SIGNAL DESCRIPTION ON RS232 INTERFACE

DM-232TO485			System / PC
Terminal	Signal	Signal type	Connect to
1	GND	–	GND
2	RxD	Output	RxD
3	TxD	Input	TxD
4	RTS	Input	RTS

RECOMMENDED DRAWING SYMBOL



WIRING EXAMPLE

The signals on the converter are connected to the signals with same name on the control system

